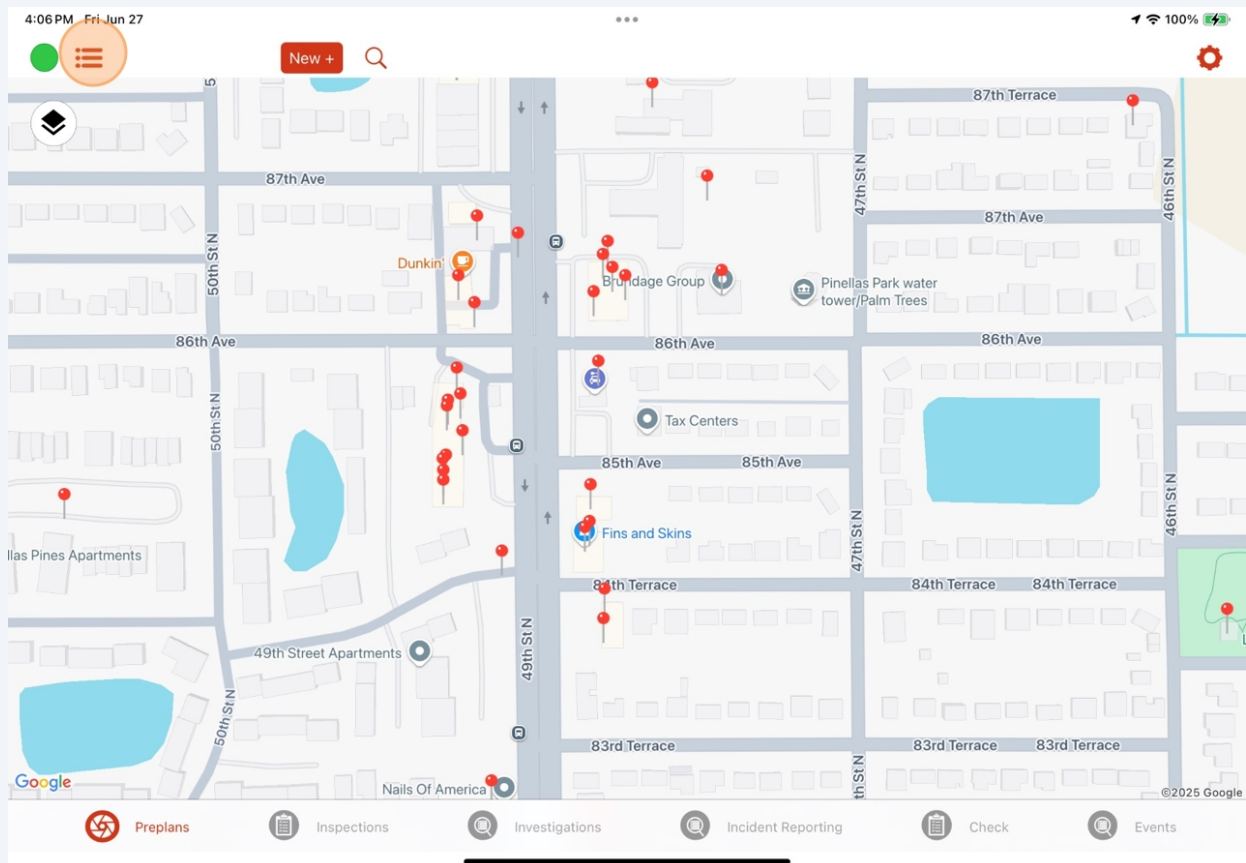


Navigating the Home View on the APX SmartCapture App (Occupancies/Preplans)



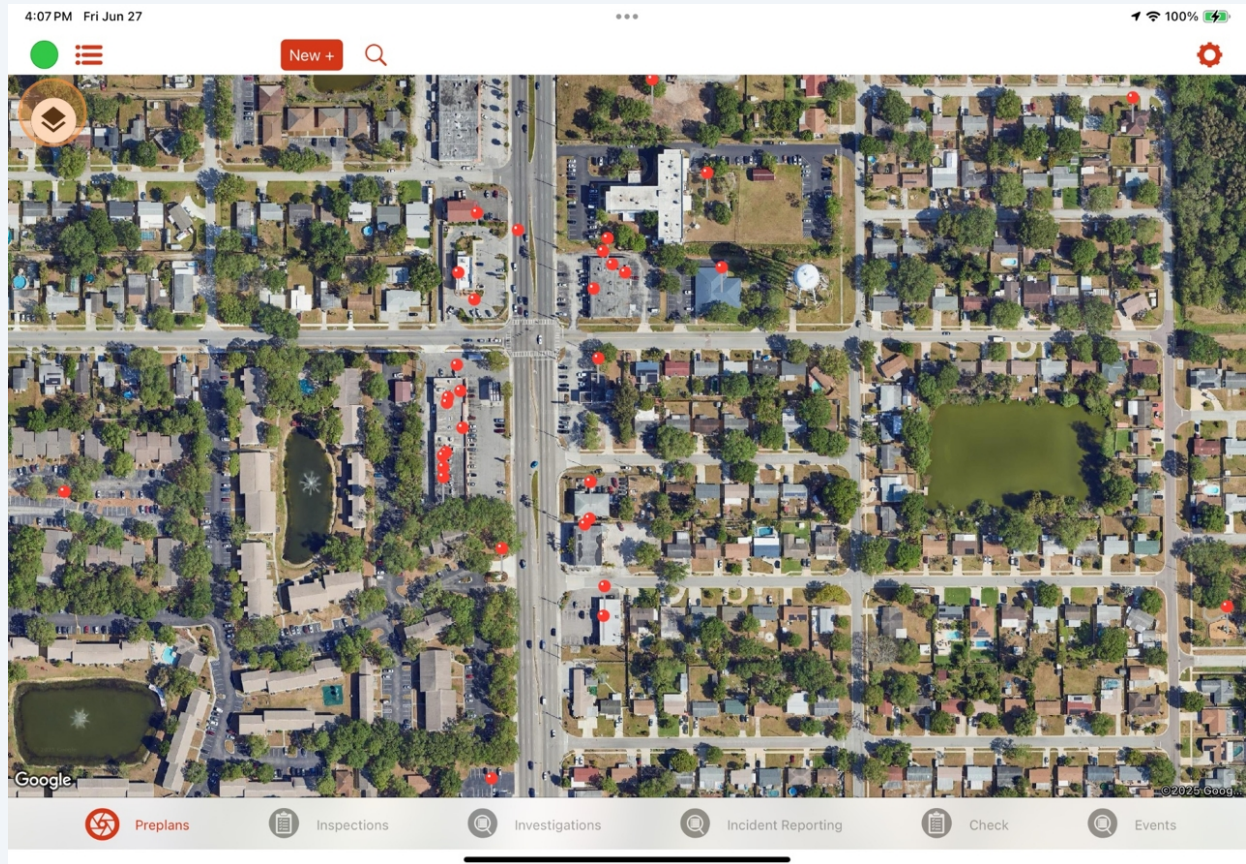
1

To switch between the Map mode and List mode of the Home View, tap the button in the top left.



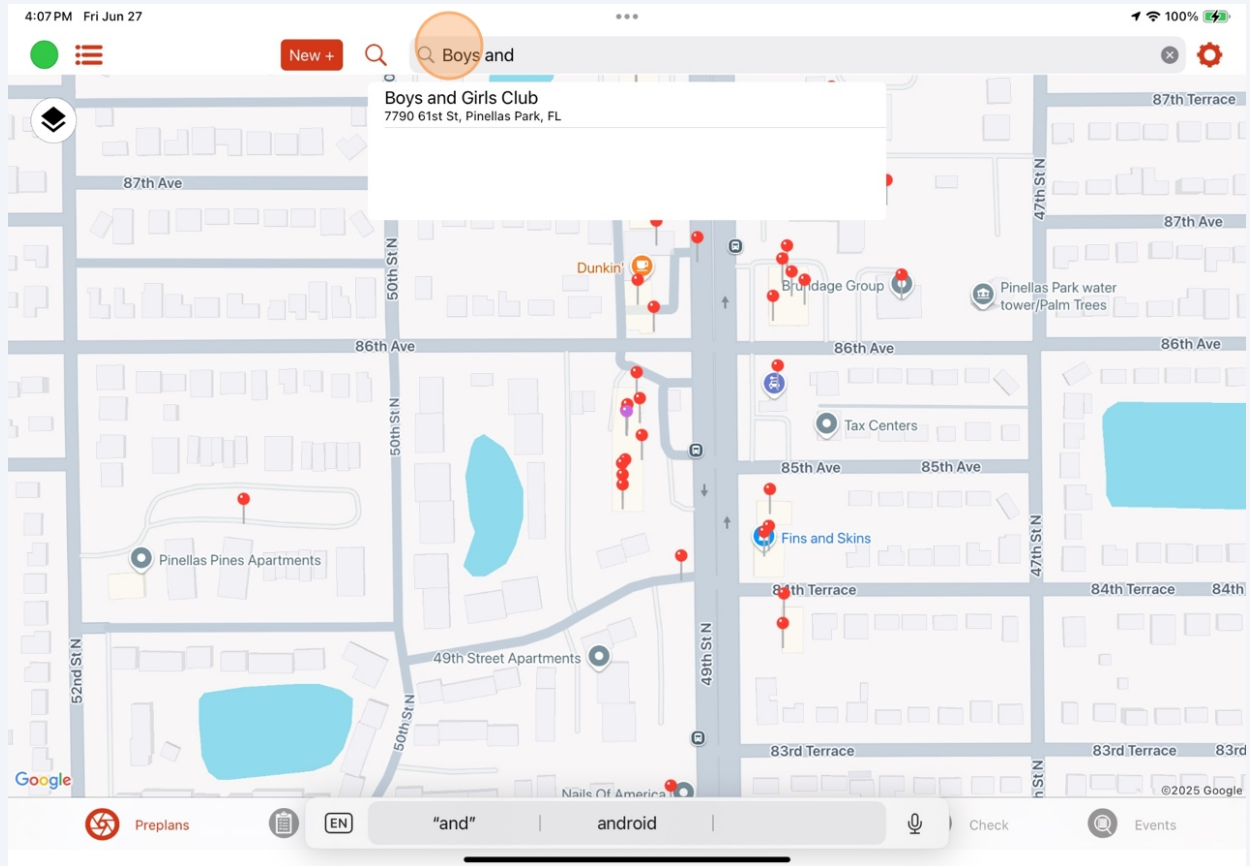
2

To switch between the Map and Satellite views of the Map mode, tap the layer button in the top left.



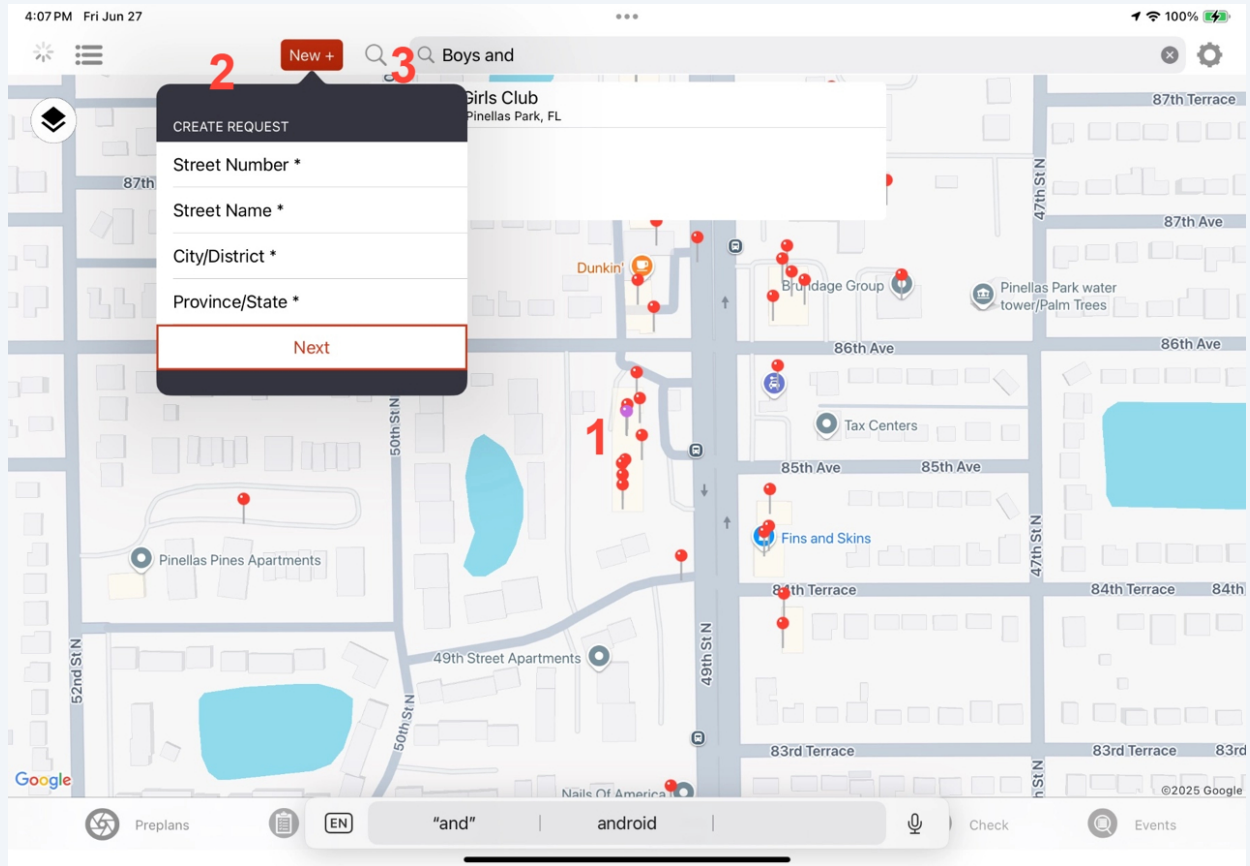
3

To search for an existing record, tap the search button and then enter the name or address in the search bar.



4 To select a new location for an inspection, you can either

1. Tap and hold on a location on the map
2. Select New + (fill out the address information, then select Next), or
3. Use the search bar



5 To open an existing record, select the pin and then tap the label that appears.

