

Navigating the SmartMAP Interface on Windows

1

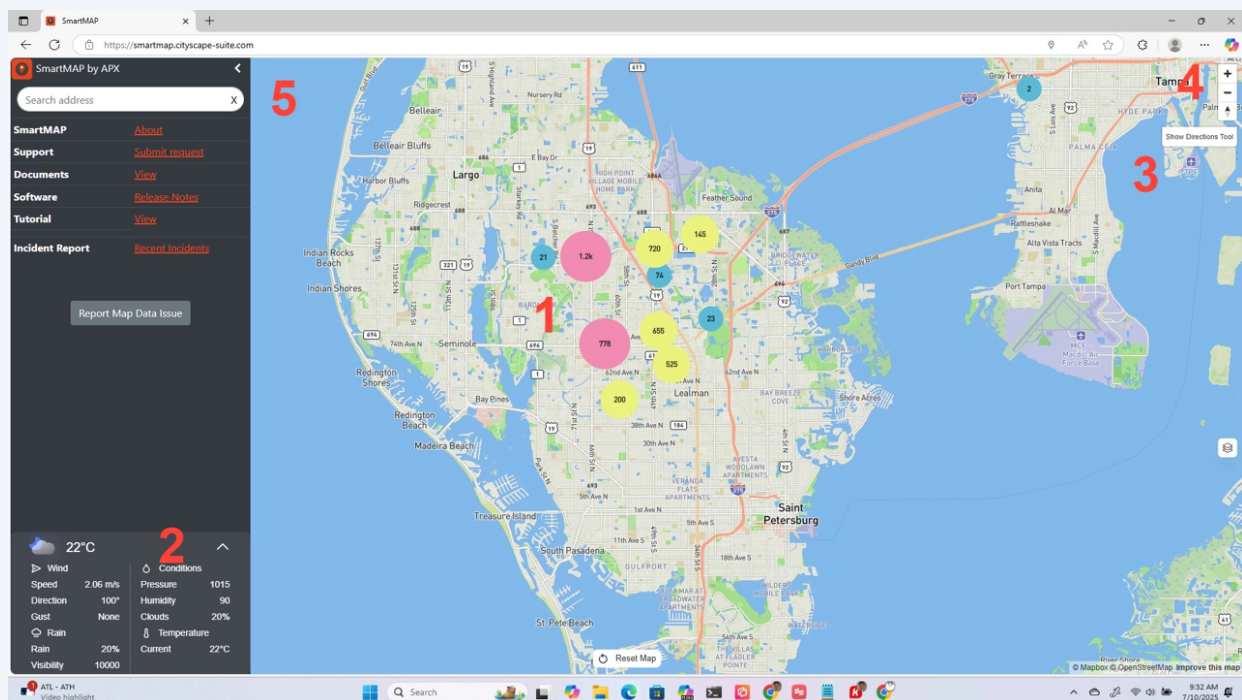
1. Use the colored bubbles on SmartMAP to determine locations with occupancy records. As you zoom in, the bubbles will change in color and number, eventually becoming individual occupancy icons.

2. Check out the current weather displayed in the bottom right. The default shows the weather for the device location. When an occupancy is selected, it will show the weather for that location.

3. View the directions tool in the top right of SmartMAP. When dispatched from a CAD message, the routing will be automatically inserted into the directions tool.

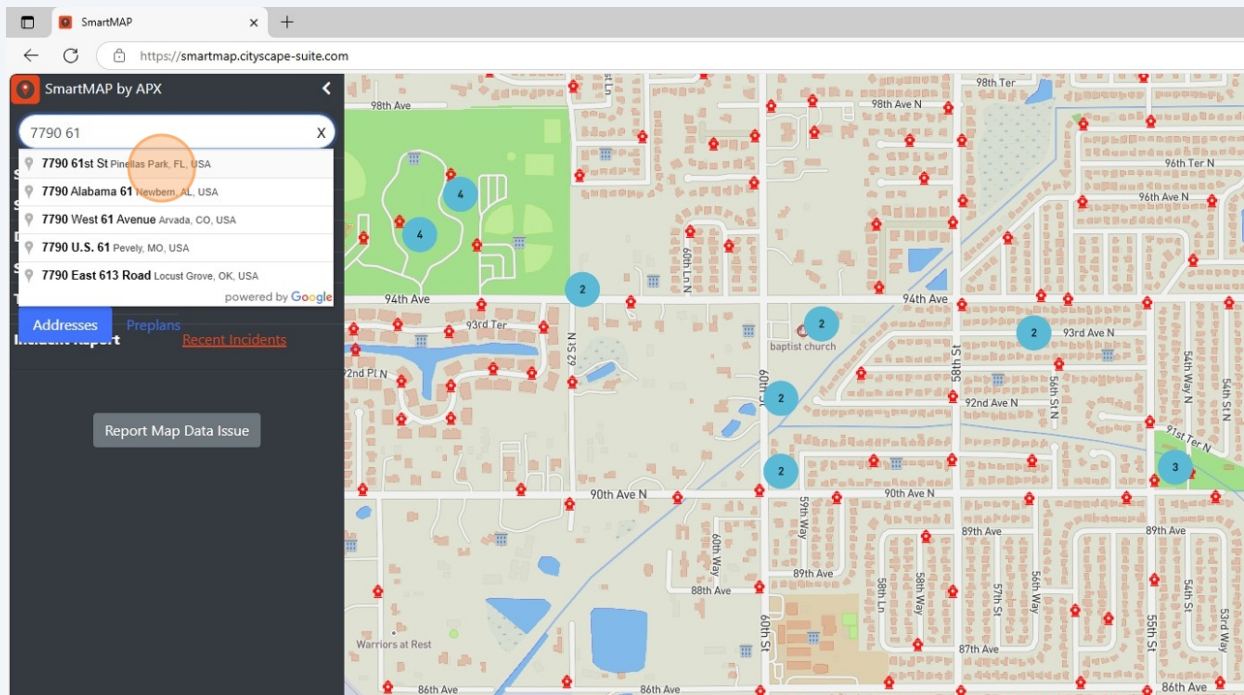
4. To zoom in on the map, use the zoom controls in the top right, but you can also zoom in/out and pan around using mouse controls or touch screen gestures if available.

5. To minimize the menu, select the arrow in the top right of the menu.



2

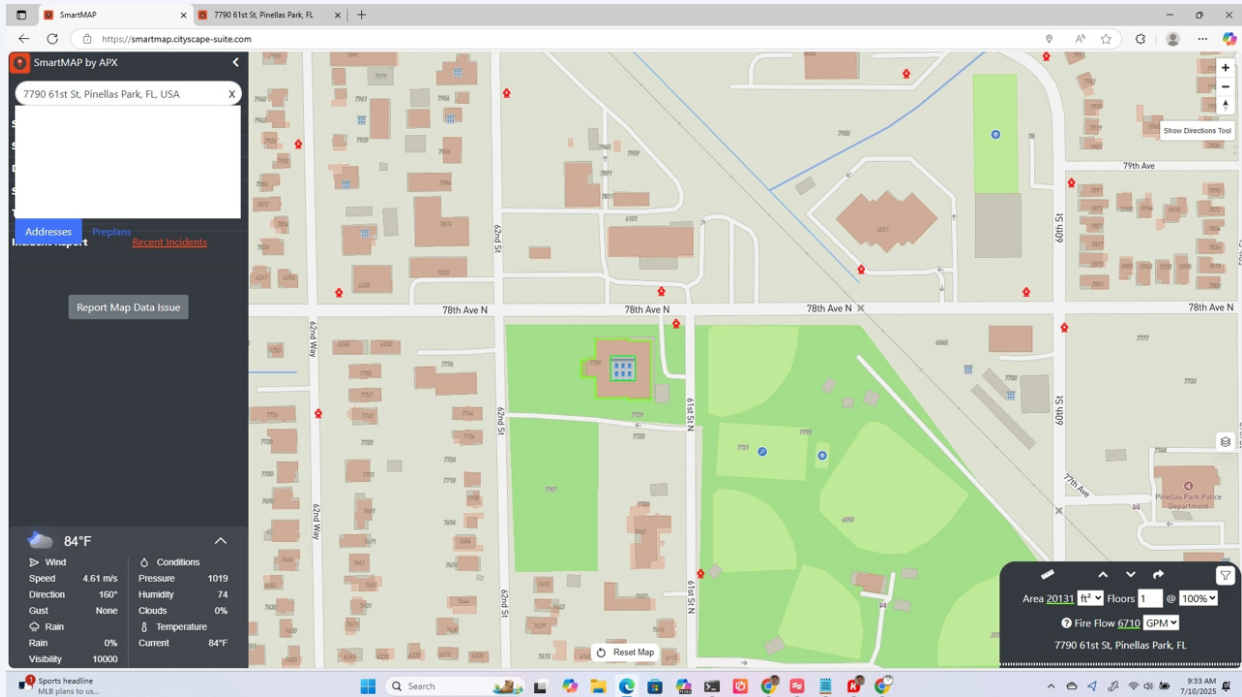
Use the search bar in the menu to search by address or by preplan/occupancy name.



3

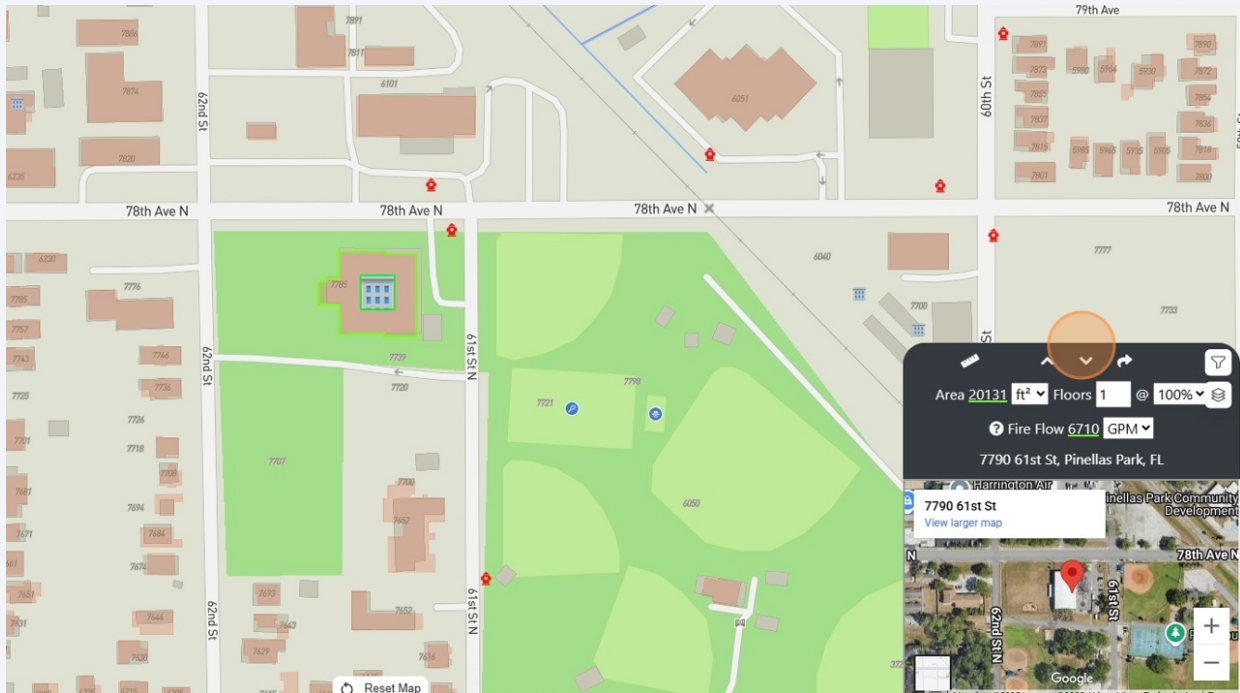
A selected building will have a green frame around it. In the bottom right, the incident info window provides details on the selected building, including:

- Address
- Area
- Fireflow Requirements (with options to change based on number of floors and percentage of involvement)



4

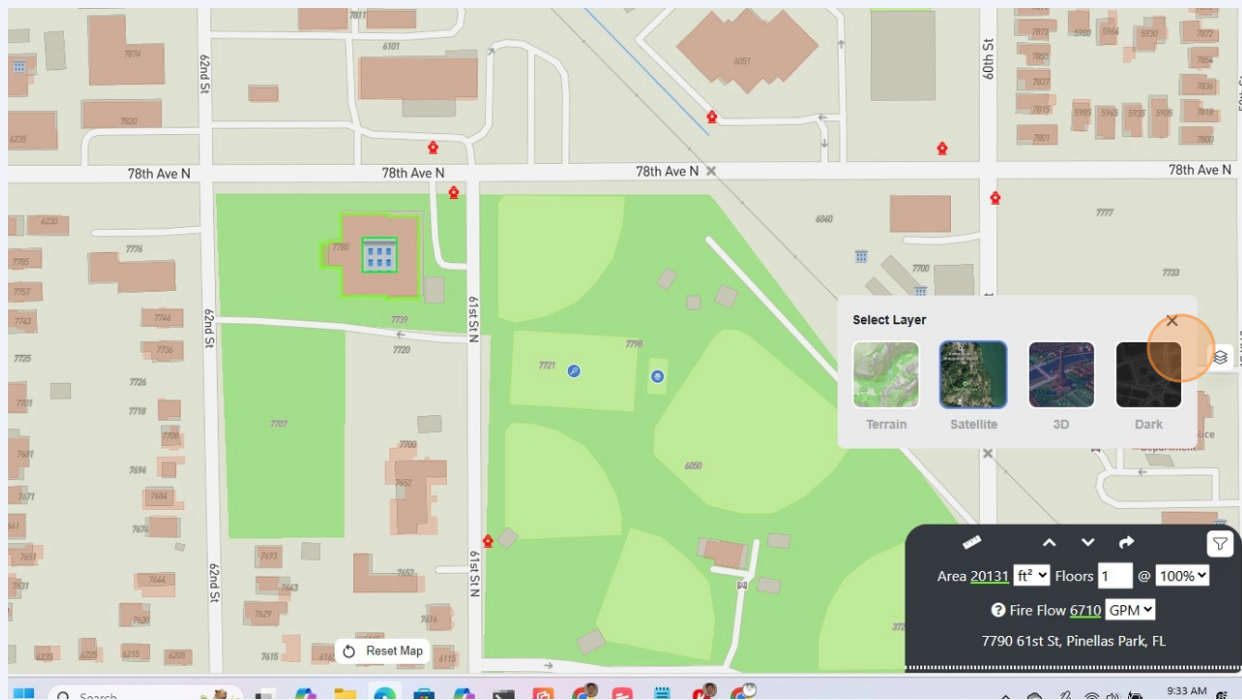
In the incident info window, use the up/down arrows to toggle a satellite view of the selected building. You can also select **View larger map** to launch a full screen Google Maps view, including street view.



5

Use the SmartMAP layers button to toggle between layers. Available layers include:

- Terrain (default)
- Satellite
- 3D
- Dark Mode



6

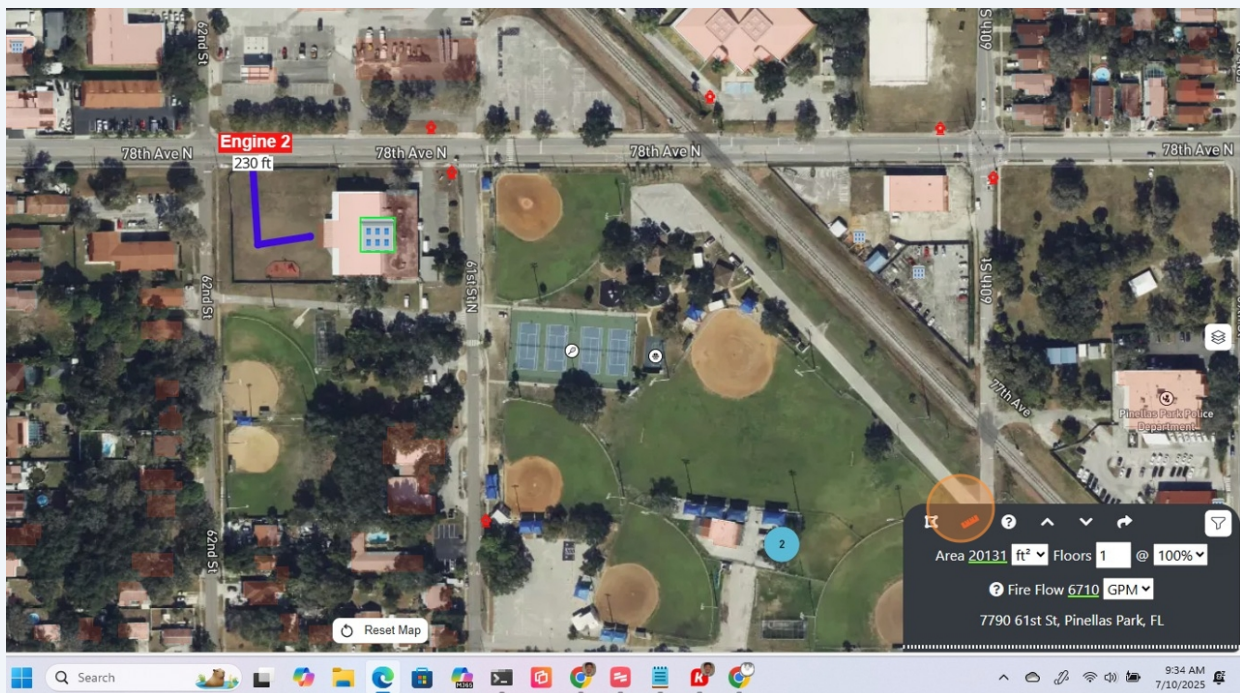
In the top left (dismiss the menu if required), select the map marker button to drop a text label on the map.



7

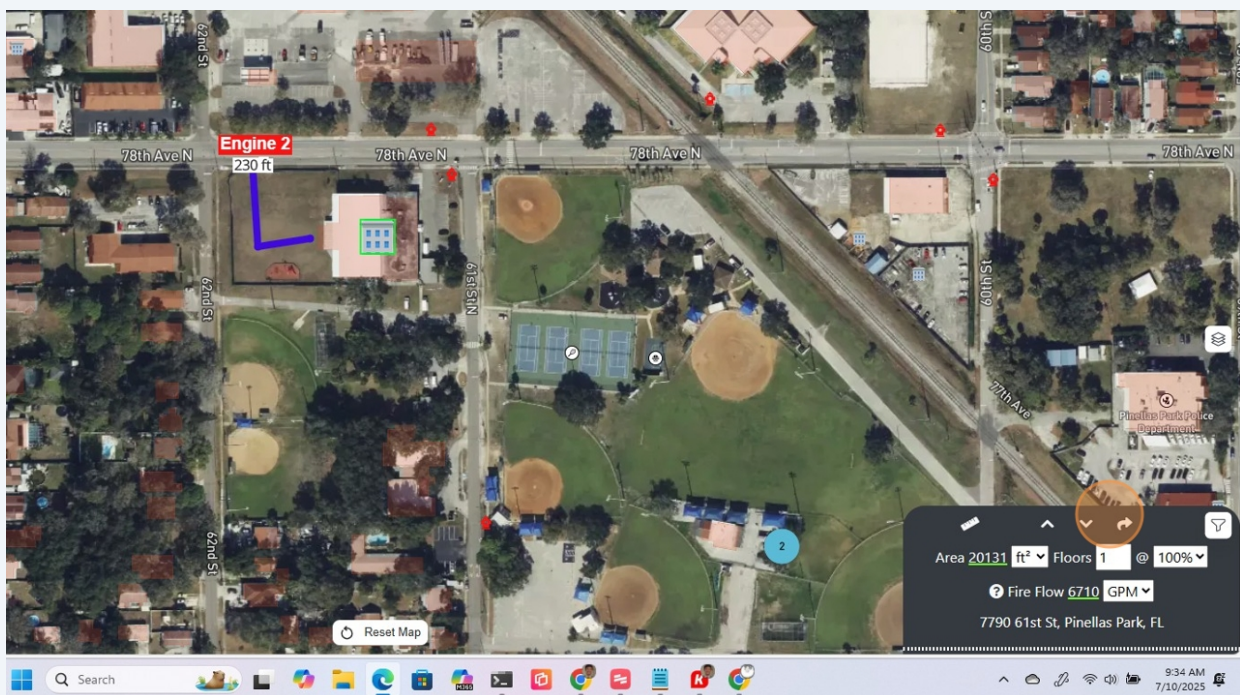
In the Incident Info window, select the measurement tool to measure a distance (e.g. a hose lay). Select the tool again to exit.

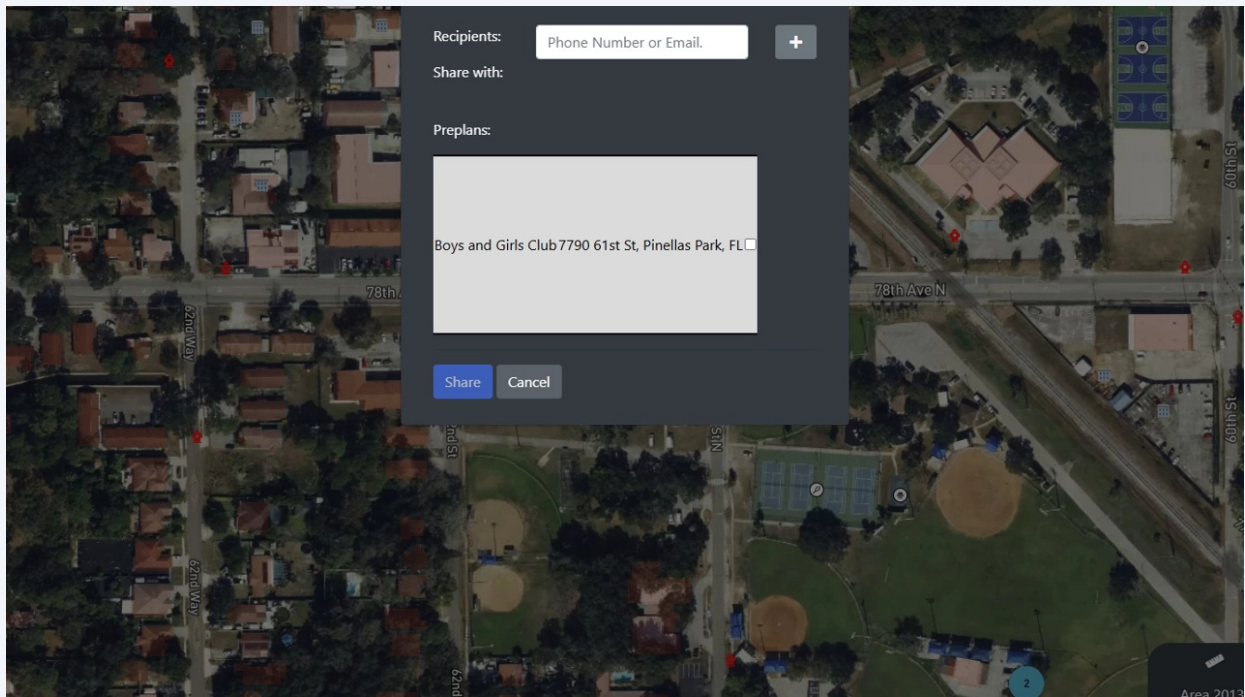




8

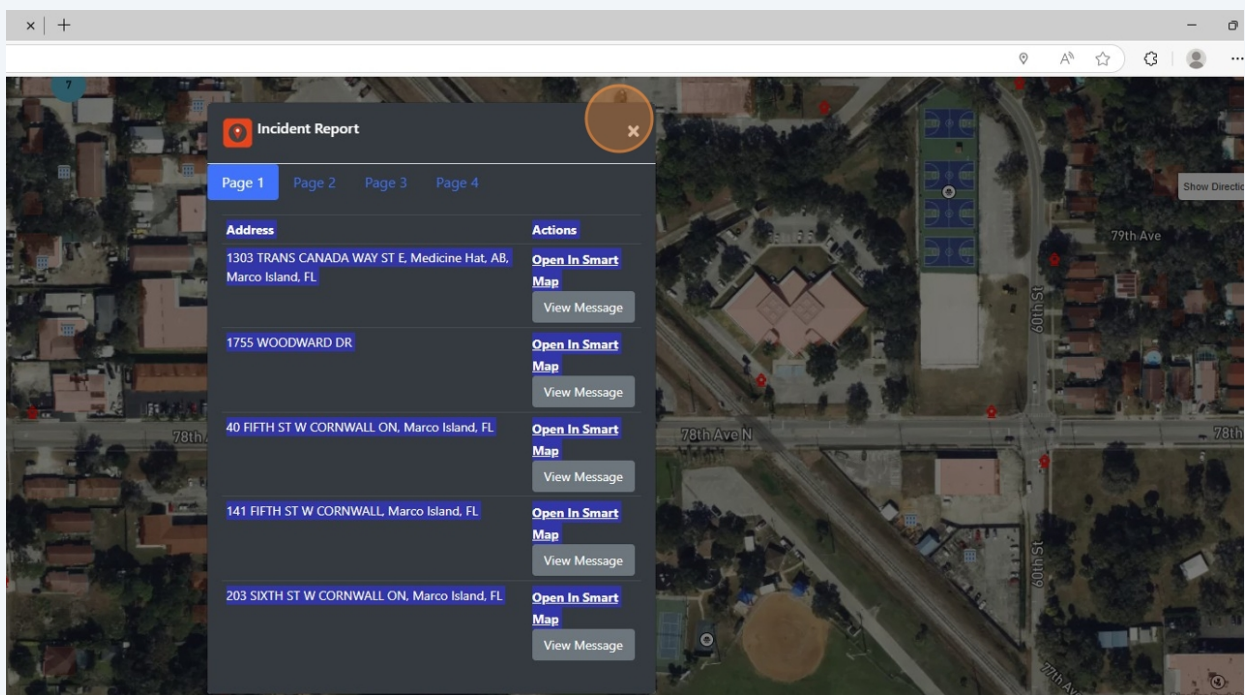
In the Incident Info window, select **Share** to send a share link for the current SmartMAP view. Share links can be sent via SMS or email.





9

Select the **Recent Incidents** button in the SmartMAP menu to view the most recent incidents and associated CAD messages.



10

Individual occupancy records / preplans are represented by a building icon. Select the preplan and then the address in the pop-up to open the record.

Note: If a building is auto-selected using the Search bar, or is selected as part of a

dispatch from CAD, any preplans on the building will launch automatically.

